

## INSTALLATION OF USB SERIAL DRIVERS

Before installing the USB drivers, it is recommended to switch off the equipment, if it is on, and disconnect it from the PC.

Decompress the data file Driver\_USB.zip in a folder, for example in Desktop.

Connect the equipment to the PC through the USB cable. After a while, the small window in Picture 1 will appear, informing the user that a connection with a new USB Serial Converter device has been found.



Picture 1 Acknowledgment of new hardware USB Serial Converter.

Afterwards, the window in Picture 2 appears, for guided installation of the new hardware. This window may appear or not, depending on system's settings.



Picture 2 Guided installation of new hardware USB Serial Converter.

Select "No, not this time" and press "Next". The window in Picture 3 appears, where you can choose the way of installing the drivers USB Serial Converter.



**Picture 3** Selection of way of installing drivers USB Serial Converter.

Select the option “Install from a list or specific location (Advanced)” and press “Next”. The window in Picture 4 will appear. Select “Search for the best driver in these locations”, and activate the option “Include this location in the search”.



**Picture 4** Choice of options for driver search and installation.

Through the “Browse” key you can select the folder where USB drivers are saved. According to the given example, a window like Picture 5 appears.



**Picture 5** Selection of USB driver folder.

Select the folder containing the USB drivers and press “OK”. Then press the “Next” key of the window in Picture 4.

The system will start installing the drivers USB Serial Converter, as shown in Picture 6.



**Picture 6** Installation of USB Serial Converter software in progress.

If the warning window for compatibility with Windows XP appears, due to the Windows Logo's testing, as per Picture 7, press "Continue Anyway".



Picture 7 Windows Logo's warning message.

The installation procedure goes on and, once it has finished, the window in Picture 8 (completion of the new hardware installation) appears.



Picture 8 Completion of the USB Serial Converter's installation.

Select “Finish” to complete the installation of drivers USB Serial Converter. The system acknowledges the new hardware USB Serial Port, informing the user through a message as per Picture 9.



**Picture 9** Acknowledgment of new hardware USB Serial Port.

The guided installation of new hardware shall be made, as per Picture 10. This window may appear or not, depending on system’s settings.



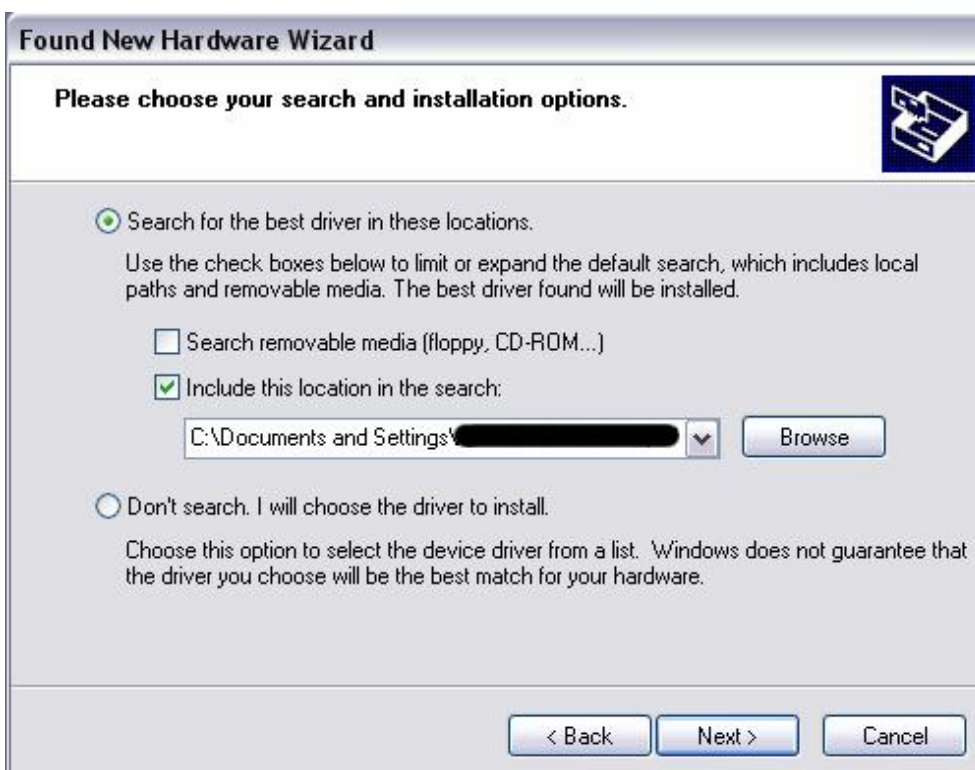
**Picture 10** Guided installation of new hardware USB Serial Port.

Select “No, not this time” and press “Next”. The window in Picture 11 appears, where you can choose the way of installing the drivers USB Serial Port.



Picture 11 Selection of way of installing drivers USB Serial Port

Select the option “Install from a list or specific location (Advanced)” and press “Next”. The window in Picture 12 will appear. Select “Search for the best driver in these locations”, and activate the option “Include this location in the search”.



Picture 12 Choice of options for driver search and installation.

Through the “Browse” key you can select the folder where USB drivers are saved. According to the given example, a window like Picture 13 appears.



**Picture 13** Selection of USB driver folder.

Select the folder containing the USB drivers and press “OK”. Then press the “Next” key of the window in Picture 14.



**Picture 14** Setting of USB driver folder.

The system will start installing the drivers USB Serial Port , as shown in Picture 15.



Picture 15 Installation of USB Serial Port software in progress.

If the warning window for compatibility with Windows XP appears, due to Windows Logo's testing, as per Picture 16, press "Continue Anyway".



Picture 16 Windows Logo's warning message.

The installation procedure goes on and, once it has finished, the window in Picture 17 (completion of the new hardware installation) appears.



**Picture 17** Completion of the USB Serial Port's installation.

Select "Finish" to complete the installation of drivers USB Serial Port. The system informs the user that USB drivers have been installed correctly through a message as per Picture 18.



**Picture 18** End of installation of USB drivers.